

roof light to be installed in accordance with manufacturers instructions inc. lead flashings

brick corbel to detail

5475 eaves 73c

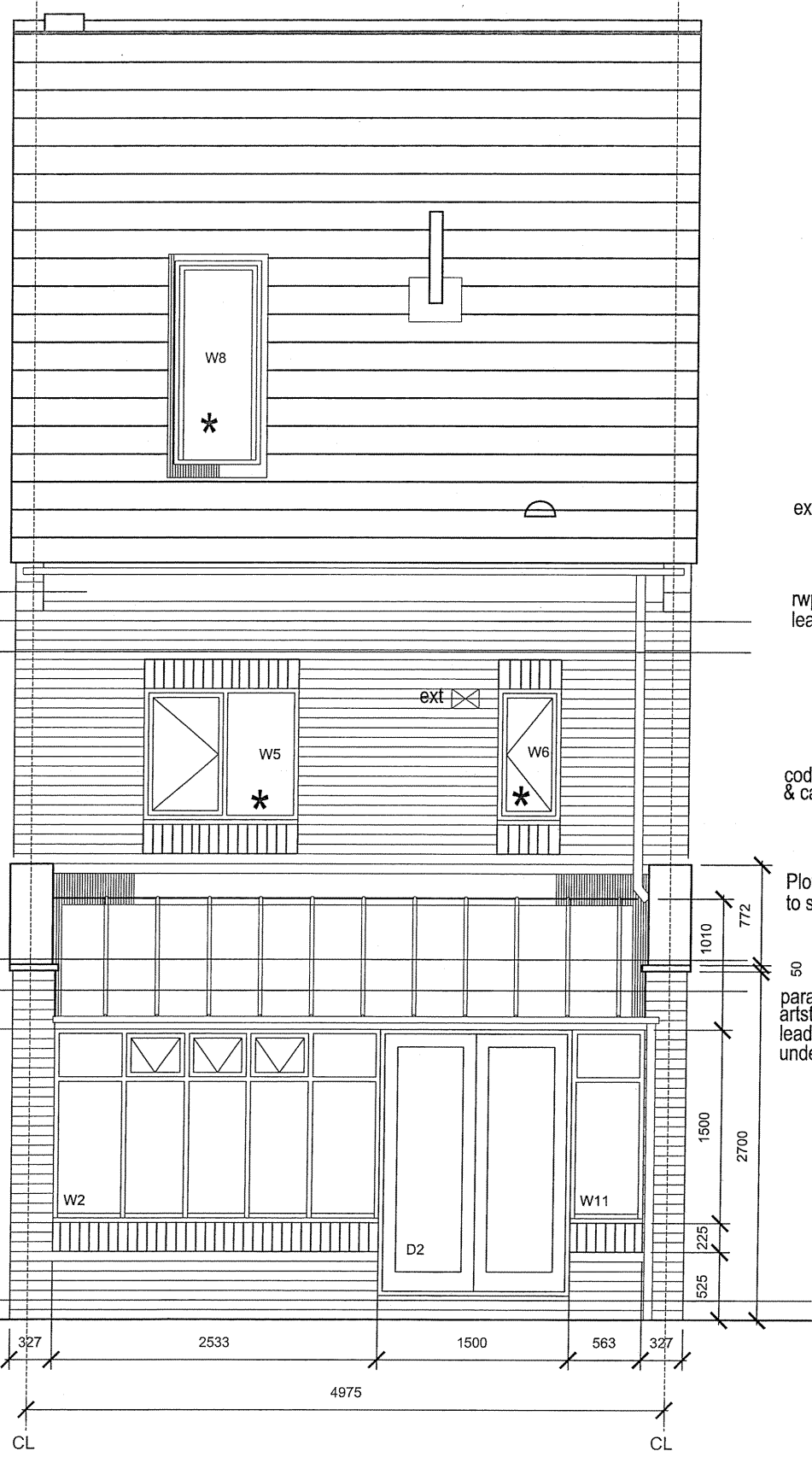
3675 cill 49c W5,6

2550 top wall

2100 head 28c

600 cill 8c W2,11

0 dpc



REAR ELEVATION

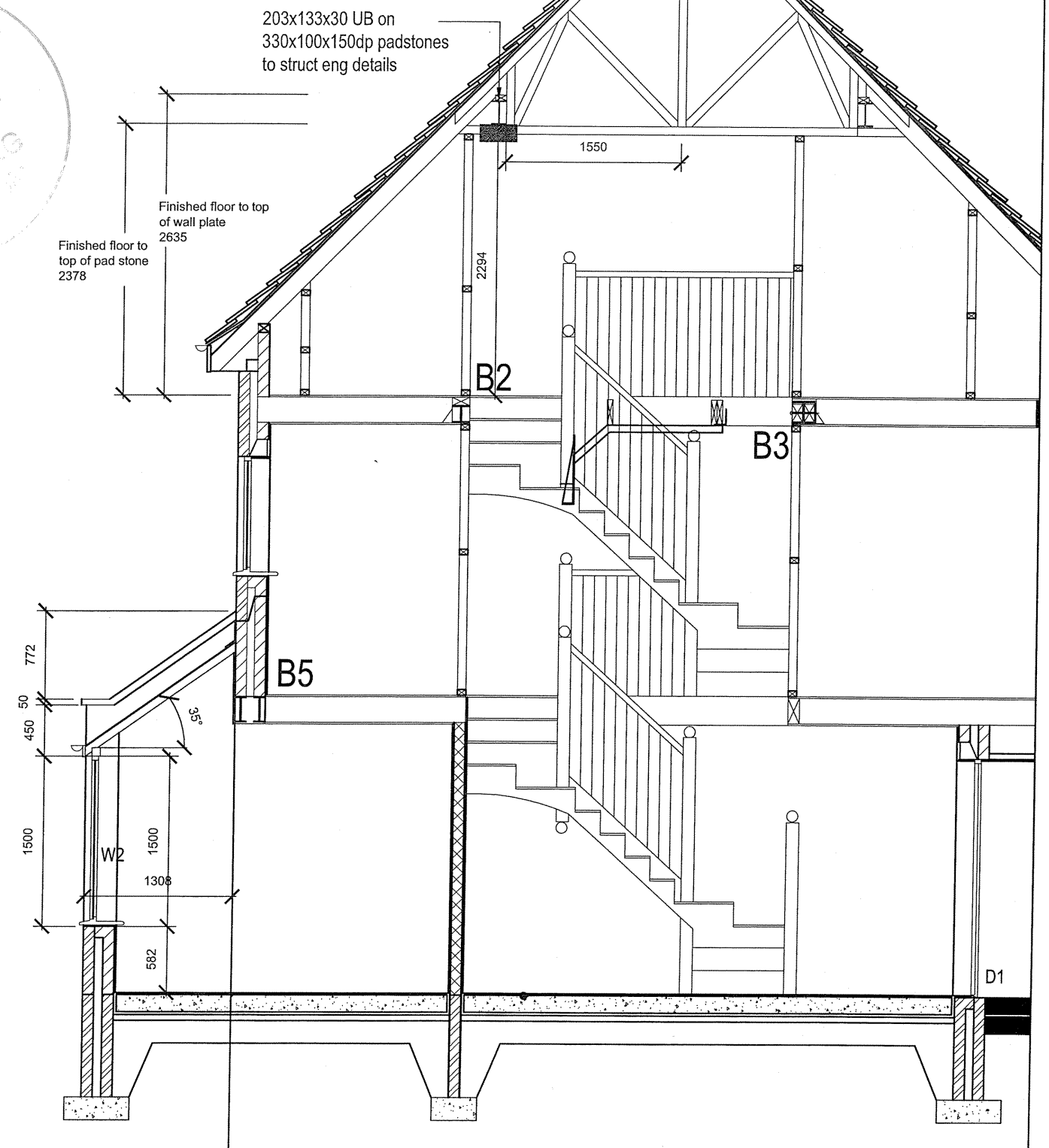
extract tile vent

nwp to discharge onto lead flashing

code 4 lead flashing & cavity tray

Plycarbonate roof over kitchen to specialist detail

50 parapet walls finished with artstone copping lead flashing to be dressed under copping to detail



SECTION



AMENDMENTS:

JOB TITLE: HAMPTON	
DWG TITLE: CONSERVATORY DETAILS	DWG No. HAMPTON 1.14
SCALE: 1:50 @ A3	DATE: SEPTEMBER 2005